


| Qty. | Description |
|------|--|
| 1 | <p>UNILIFT KP150-A-1</p>  <p>Note! Product picture may differ from actual product</p> <p>Product No.: 011H3600 Submersible drainage pump</p> <p>Vertical single-stage stainless steel submersible pump with vertical discharge port and integrated submersible 1-phase canned motor in insulation class F with thermal overload protection.</p> <p>The pump is fitted with suction strainer and a carrying handle and is supplied with a 5 m mains cable and float switch for automatic start and stop.</p> <p>The impeller is a semi-open impeller for 10 mm free passage suitable for pumping groundwater, surface water, rain water and similar liquids.</p> <p>The pump has a double shaft seal consisting of two lip seals with grease in-between.</p> <p>The pump has an outer casing ensuring continuous cooling of the motor by the pumped liquid. The rotor shaft operates in two maintenance-free carbon bearings cooled by the pumped liquid.</p> <p>The motor is filled with a non-toxic motor liquid.</p> <p>Liquid: Liquid temperature range: 0 .. 50 °C Density: 998.2 kg/m³</p> <p>Technical: Maximum flow: 2.36 l/s Max. Particle: 10 mm</p> <p>Materials: Pump housing: Stainless steel EN 1.4301 AISI 304 Impeller: Stainless steel EN 1.4301 AISI 304</p> |



Company name:

Created by:

Phone:

Date: 13/05/2023

Project:

Reference Number:

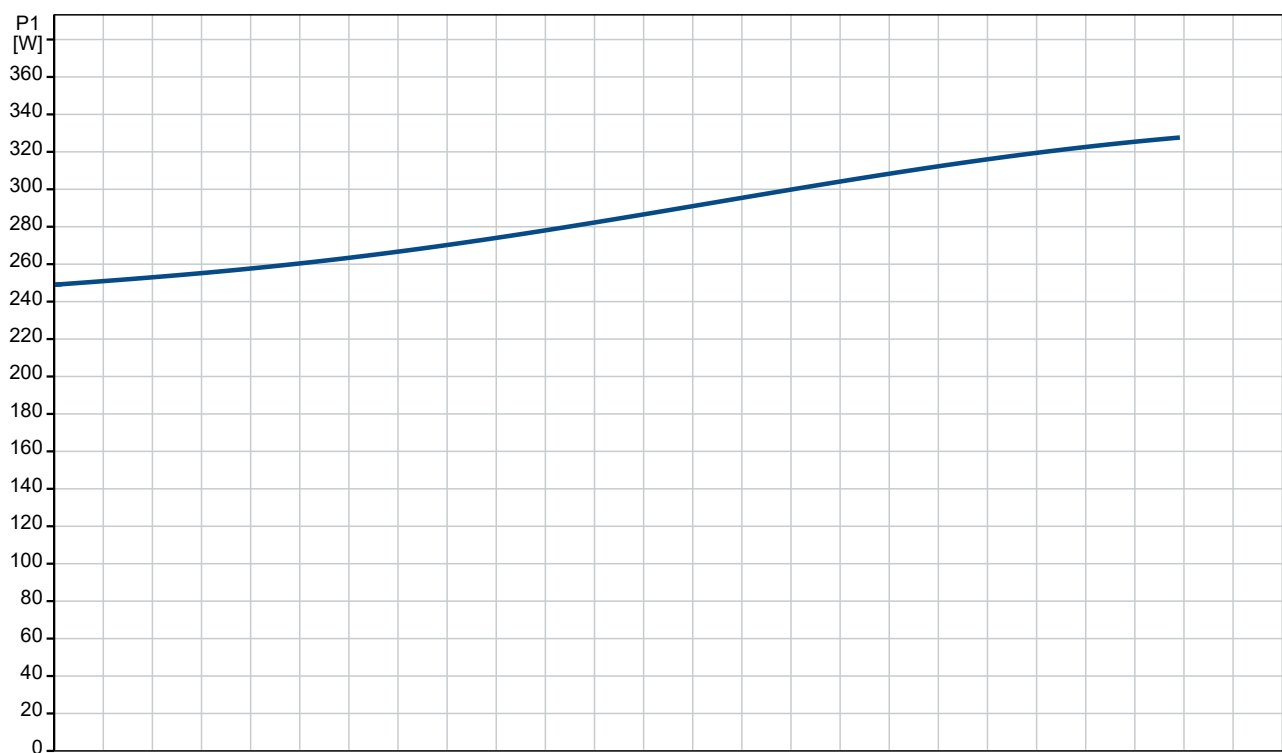
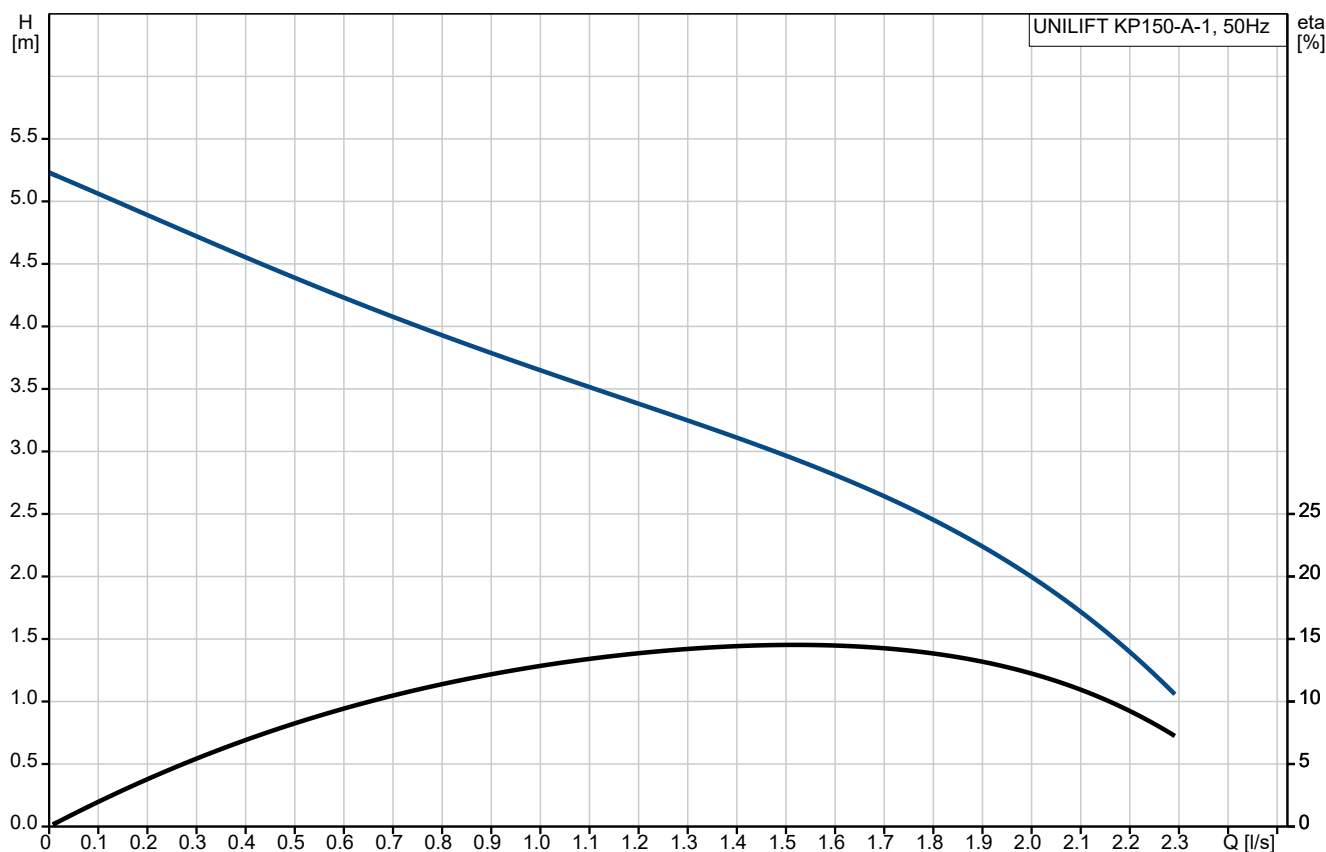
Client: Matjar Misr

Client Number: Gr5898874556

Contact:

| Qty. | Description |
|------|--|
| 1 | <p>Installation:</p> <p>Type of connection: Rp</p> <p>Size of connection: 1 1/4 inch</p> <p>Maximum installation depth: 2 m</p> <p>Electrical data:</p> <p>Power input - P1: 300 W</p> <p>Mains frequency: 50 Hz</p> <p>Rated voltage: 1 x 220-230 V</p> <p>Rated current: 1.3 A</p> <p>Capacitor size - run: 8 µF/400 V</p> <p>Enclosure class (IEC 34-5): IP68</p> <p>Insulation class (IEC 85): F</p> <p>Length of power cable: 5 m</p> <p>Type of cable plug: CH</p> <p>Others:</p> <p>Net weight: 6.5 kg</p> <p>Gross weight: 7 kg</p> <p>Shipping volume: 0.013 m³</p> |

011H3600 UNILIFT KP150-A-1 50 Hz



Project:

Reference Number:

Client:

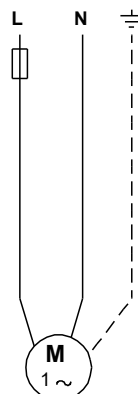
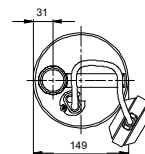
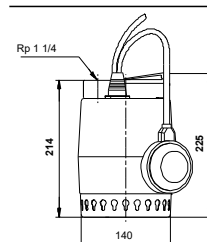
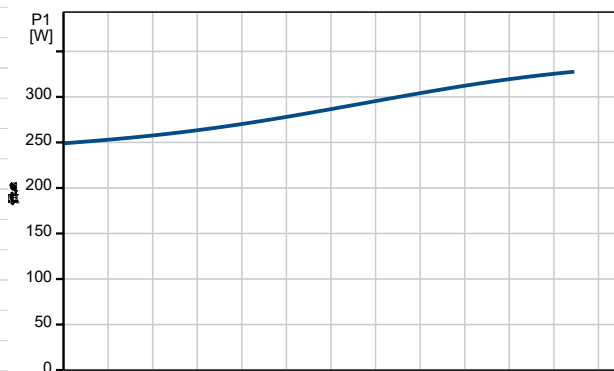
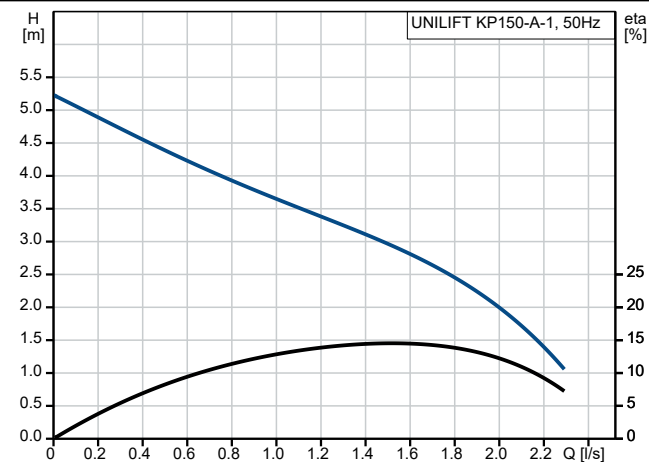
Matjar Misr

Client Number:

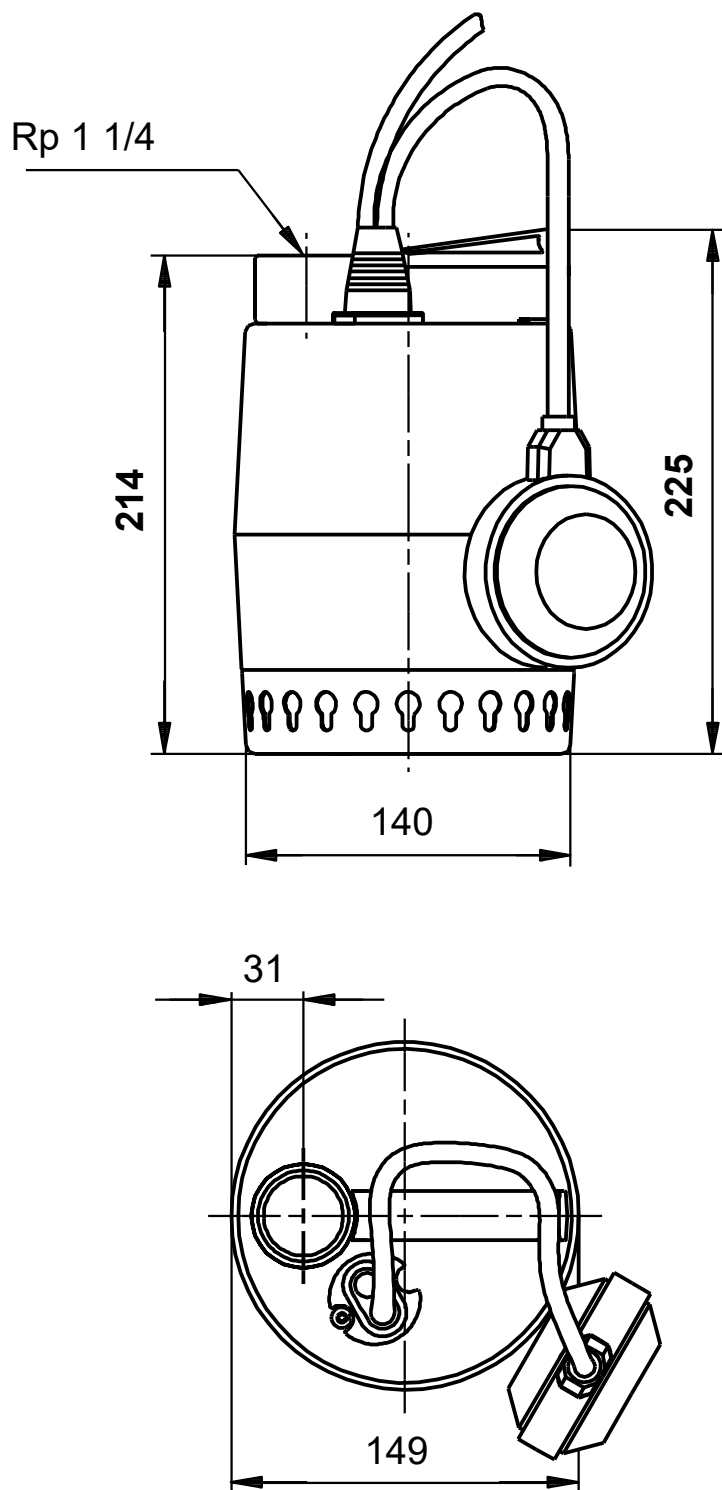
Gr5898874556

Contact:

| Description | Value |
|-----------------------------|-------------------|
| General information: | |
| Product name: | UNILIFT KP150-A-1 |
| Product No: | 011H3600 |
| EAN number: | 5700391115691 |
| Technical: | |
| Maximum flow: | 2.36 l/s |
| Maximum head: | 5.5 m |
| Max. Particle: | 10 mm |
| Model: | A |
| Materials: | |
| Pump housing: | Stainless steel |
| Pump housing: | EN 1.4301 |
| Pump housing: | AISI 304 |
| Impeller: | Stainless steel |
| Impeller: | EN 1.4301 |
| Impeller: | AISI 304 |
| Installation: | |
| Type of connection: | Rp |
| Size of connection: | 1 1/4 inch |
| Maximum installation depth: | 2 m |
| Liquid: | |
| Liquid temperature range: | 0 .. 50 °C |
| Density: | 998.2 kg/m³ |
| Electrical data: | |
| Power input - P1: | 300 W |
| Mains frequency: | 50 Hz |
| Rated voltage: | 1 x 220-230 V |
| Rated current: | 1.3 A |
| Capacitor size - run: | 8 µF/400 V |
| Enclosure class (IEC 34-5): | IP68 |
| Insulation class (IEC 85): | F |
| Built-in motor protection: | CONTACT |
| Thermal protec: | internal |
| Length of power cable: | 5 m |
| Type of cable plug: | CH |
| Controls: | |
| Level switch: | float switch |
| Others: | |
| Net weight: | 6.5 kg |
| Gross weight: | 7 kg |
| Shipping volume: | 0.013 m³ |



011H3600 UNILIFT KP150-A-1 50 Hz



Note! All units are in [mm] unless others are stated.

Disclaimer: This simplified dimensional drawing does not show all details.

